



# Peartree Hill Solar Farm

## Statutory Consultation

Wednesday 15 May - Wednesday 26 June 2024



**RWE (previously JBM Solar) is commencing its statutory consultation on proposals for Peartree Hill Solar Farm, a new solar farm project with battery storage in East Riding of Yorkshire.**

As Peartree Hill would generate over 50MW of electricity, it is classed as a Nationally Significant Infrastructure Project (NSIP) and will proceed through the Development Consent Order (DCO) planning process.

### Why solar?

Our energy system is vulnerable to changes in global energy prices, directly impacting UK bills. Our proposals for Peartree Hill will help to address this, supporting the UK to become a more independent and self-sufficient energy-producing nation.

As one of the cheapest and most rapidly deployable forms of renewable energy, solar will play an important role in bolstering the UK's energy security, while supporting the UK's net zero commitments.

### Seeking your views

We were pleased so many local residents and stakeholders took part in our non-statutory consultation last year. Feedback received, alongside the emerging findings from environmental and technical assessments, has helped to shape our proposals.

We now want to hear your thoughts on the updated design of Peartree Hill.

The statutory consultation will run from **Wednesday 15 May** lasting six weeks, until **11:59pm on Wednesday 26 June 2024**.

Your input is important to us, and we look forward to your active participation in shaping the proposals further, ahead of submitting our application for a DCO to the Secretary of State for Energy Security and Net Zero.

### What has changed?

In response to feedback, we have significantly reduced the areas proposed for solar panels, with large buffers added near homes, as well as increased ecological areas and additional planting to screen views of solar infrastructure from residential areas, roads and footpaths. We have also added permissive paths throughout the site, providing up to 7km of new recreational walking routes for local people.



## Our proposals



Contributing **320MW of clean electricity to the national grid**, enough to power the equivalent of approximately 167,000<sup>1</sup> homes – that's more than every home in Hull!



Supporting the UK's net zero targets by **displacing over 11,400,000 tonnes of CO<sub>2</sub>** from equivalent fossil fuel energy – that equates to taking c.166,000 cars off the road each year.



**Battery Energy Storage Systems (BESS) on-site**, ensuring the solar farm can be as flexible and as efficient as possible in delivering energy to the grid.



**Over 95% of the solar panel areas can be made available for sheep grazing**, retaining an agricultural use and allowing topsoil to recover, by increasing soil organic matter and improving soil structure.



**Over 50% Biodiversity Net Gain (BNG) to be delivered on-site**, providing ecological enhancements through new and improved habitats, such as wildflower meadows, grassland areas, bird and bat nesting boxes, and beehives.



RWE will provide **a community benefit fund of up to £4.2 million** to support local community groups and initiatives.



**Around £18.5 million generated in business rates** over the lifetime of the project, to be used by East Riding of Yorkshire Council to fund important local services.



Providing **additional opportunities for public recreation**, with up to 7km of proposed new permissive paths across the site, outdoor picnic areas, benches, wildflower meadows and community orchards.



**Up to 15km of proposed new hedgerow and trees** including a mix of mature and semi-mature tree planting to further improve visual screening and habitat creation.



**Educational opportunities introduced across the site**, including an outdoor classroom area, information boards and educational trails, providing information about local wildlife, historical features and renewable energy generation.

## Who is RWE?

The initial plans for Peartree Hill were presented by JBM Solar during the non-statutory consultation. We are proud to announce that JBM Solar has now been acquired by RWE, one of the three largest solar developers in the UK. It is RWE's ambition to have a carbon neutral energy portfolio by 2040, providing clean, secure and affordable energy to millions of households.

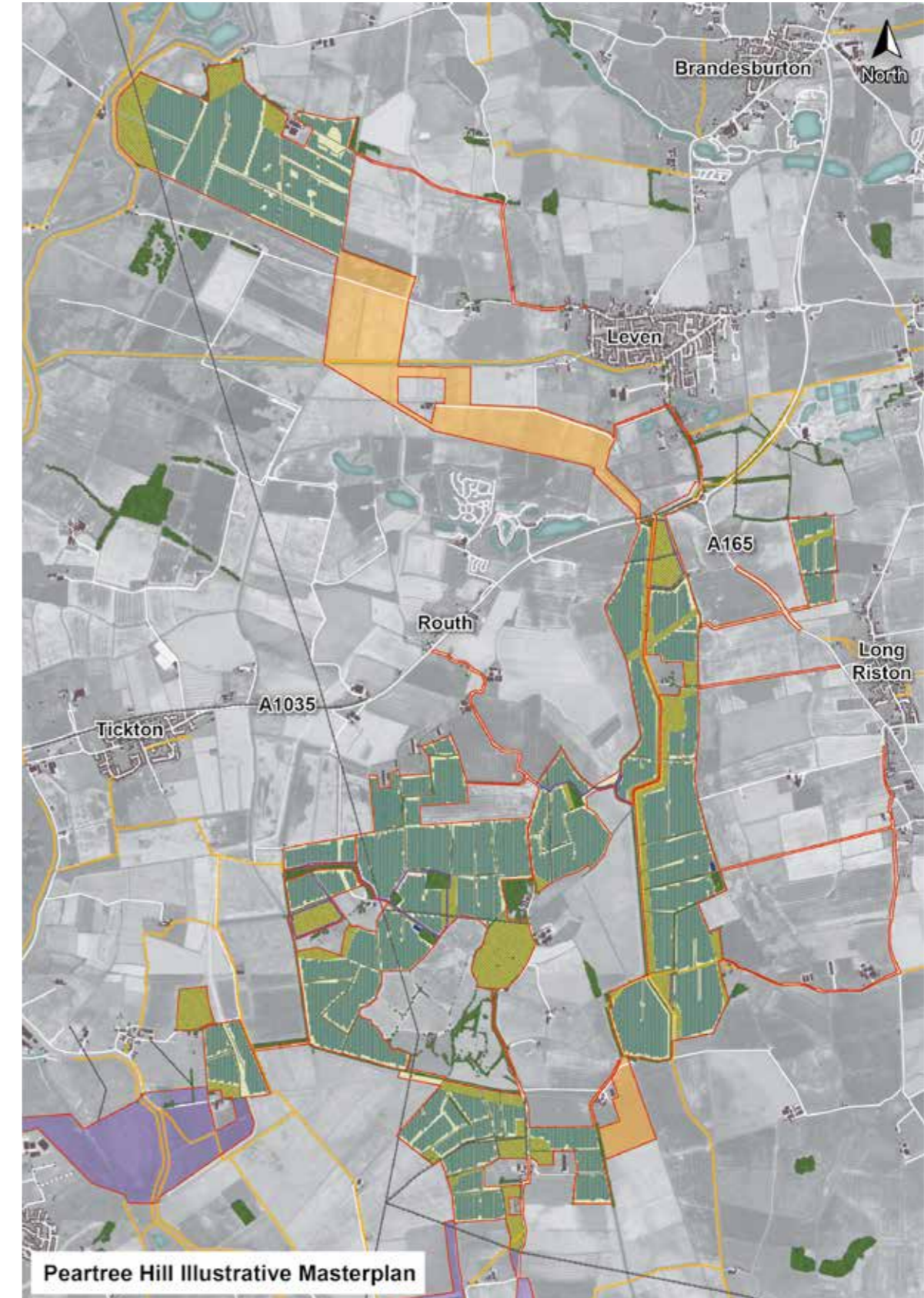
Proposals for Peartree Hill are still led by the same knowledgeable team with the same values. As part of RWE, Peartree Hill will now benefit from over 125 years of energy expertise, through design, construction, and operation.

## Key Milestones



## Peartree Hill Illustrative Masterplan

For more details on the proposals for each land area, please visit the consultation website, pick up a brochure or attend one of our public events.



<sup>1</sup> Calculated based on 2022 generation, and assuming average (mean) annual household consumption of 3,240kWh, based on latest (Jan 2024) statistics from the Department of Energy Security and Net Zero.





## How to get involved!

We hope that you will take the opportunity to learn more about Peartree Hill and help shape the development proposals. The deadline for responses is **11:59pm on Wednesday 26 June 2024**. Here is how you can get involved:

### Visit Our Website

View our proposals, learn more about solar and provide us with your feedback by visiting our consultation website at [peartreehillsolar.co.uk](http://peartreehillsolar.co.uk).

You can also register for updates to ensure you receive important notifications about Peartree Hill as the project progresses.

### Contact Us

If you have any questions, suggestions, or would like to provide feedback on our proposals, our dedicated team is here to assist you. You can reach us via:

 **01482 695 004**

 [info@peartreehillsolar.co.uk](mailto:info@peartreehillsolar.co.uk)

 **FREEPOST PEARTREE HILL SOLAR FARM**

### Follow us on Social Media

Connect with us on Facebook to stay informed, receive project updates, and engage in online discussions. Find us on Facebook using [fb.com/peartreehillsolarfarm](https://www.facebook.com/peartreehillsolarfarm).

### Unable to get online?

If you are unable to access the internet, have any accessibility requirements or would prefer a hard copy of our material please contact us on our dedicated phonenumber at: **01482 695 004**.

A member of our team would be happy to arrange for copies of the consultation information to be sent in the post, in the format required, or to record your feedback over the phone.

Scan the QR code to visit our consultation website: [peartreehillsolar.co.uk](http://peartreehillsolar.co.uk)



## Join us at our Consultation Events

Join us at our in-person consultation events or webinars to engage directly with our project team, ask questions, and share your thoughts. You'll find a full list of event details below:

Date	Time	Location
Tuesday 21 May 2024	1pm-7pm	<b>Cottingham Civic Hall</b> , Market Green, Cottingham, HU16 5QG
Wednesday 22 May 2024	1pm-7pm	<b>Leven Village Hall</b> , North Street, Leven, HU17 5NF
Tuesday 28 May 2024	6.30pm-8pm	<b>Online Webinar</b> (Register at <a href="http://peartreehillsolar.co.uk">peartreehillsolar.co.uk</a> )
Saturday 1 June 2024	11am-3pm	<b>Tickton Village Hall</b> , Main Street, Tickton, HU17 9RZ
Monday 3 June 2024	1pm-6.30pm	<b>Wawne Village Hall</b> , 36 Main Street, Wawne, HU7 5XH
Wednesday 12 June 2024	6.30pm-8pm	<b>Online Webinar</b> (Register at <a href="http://peartreehillsolar.co.uk">peartreehillsolar.co.uk</a> )

## Deposit Locations

A physical copy of the consultation documents, along with feedback forms and Freepost envelopes, will be available for inspection at a number of deposit locations throughout the consultation period.

A hard copy of the Preliminary Environmental Information Report can be requested for a charge £0.35 per page to cover printing and posting costs.

Locations	Opening times*
<b>Beverley Library</b> , Champney Road, Beverley, HU17 8HE	<b>Monday</b> 9:30am-5pm <b>Tuesday</b> 9:30am-8pm <b>Wednesday</b> 9:30am-5pm <b>Thursday</b> 9:30am-8pm <b>Friday</b> 9:30am-5pm <b>Saturday</b> 9am-4pm <b>Sunday</b> closed
<b>Leven Library</b> , Recreation Hall, East Street, Leven, Beverley, HU17 5NG	<b>Wednesday</b> 10:30am-12:30pm, 3:30pm-7pm

Consultation documents will also available to view at Tickton Village Hall (Main Street, Tickton, HU17 9RZ) when the village hall is open.

\*subject to change on bank holidays